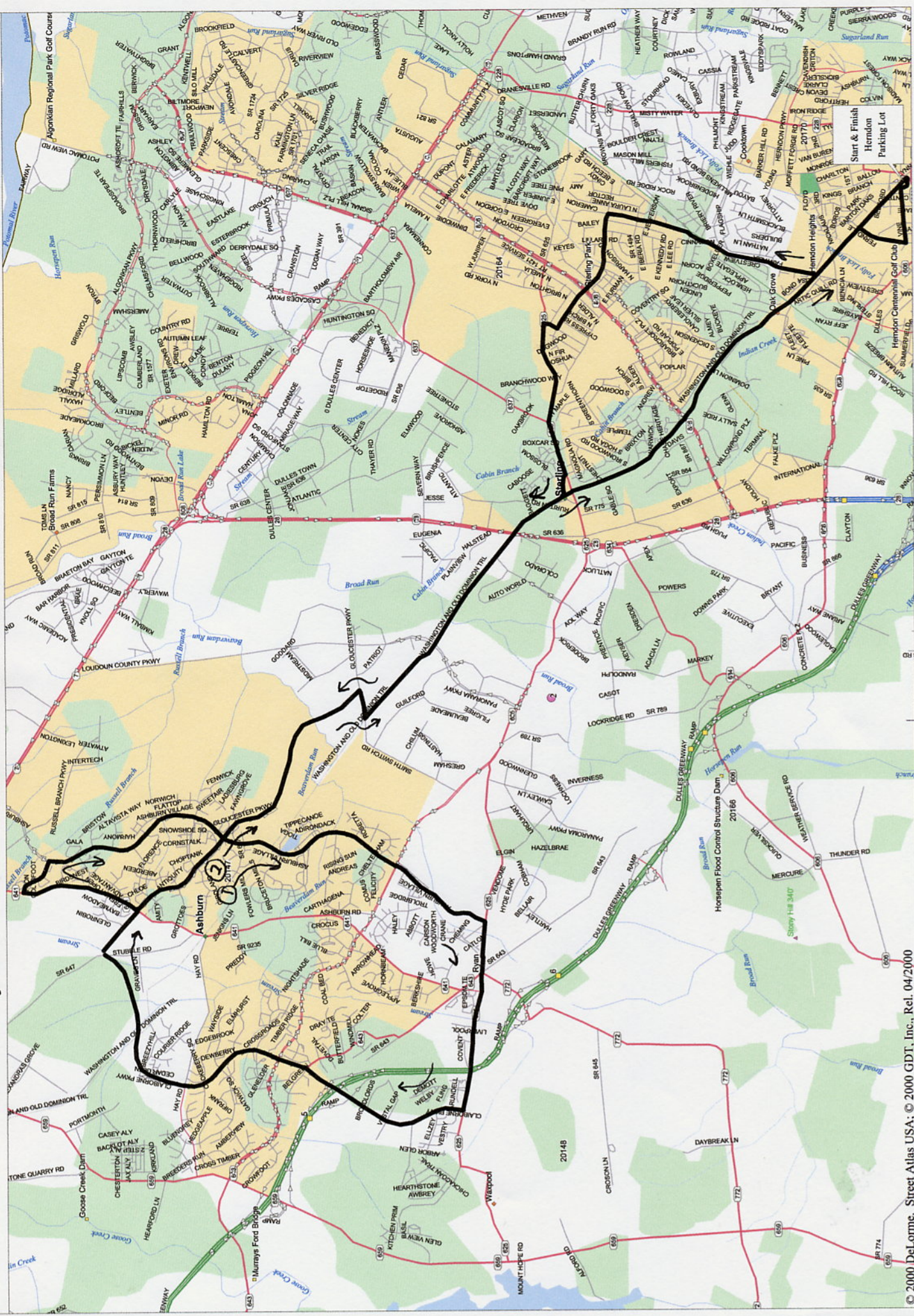


Reston Bicycle Club Ashburn Loop 37.6 Mile Ride [© 2009 RBC/KHT]



0.0 S Exit Parking Lot
X Center St.
TBO Vine St.
0.4 R Ferndale
0.8 L W&OD Trail
1.2 R Crestview
2.8 L E. Beech
3.4 X Sterling Blvd.
3.7 R N. Aspen
3.8 L Church
5.0 R Rurtian Cir (before trail)
5.2 R W&OD Trail
7.3 R Smith's Switch
7.5 L Gloucester
10.4 R Ashburn Rd
11.8 R Courtland

12.1 R Ashburn Village Blvd
15.7 R Waxpool Rd. (625)
17.0 R Claiborne
19.3 X Hay Rd.
20.5 R Gloucester
21.7 R Ashburn Village Blvd.
23.9 R Waxpool Rd. (625)
25.2 R Claiborne
27.5 X Hay Rd.
28.7 R Gloucester
31.5 R Smith's Switch
31.7 L W&OD Trail
37.5 R Station
37.6 R Parking Lot
END

R = Right
 L = Left
 S = Straight
 X = Cross
 TBO = To Be On
 TRO = To Remain On
 SS = Stop Sign
 SL = Stop Light
 BR = Bear Right
 BL = Bear Left